

# NORTH OGDEN

LOTS 14, 40 & 41, PLAT B

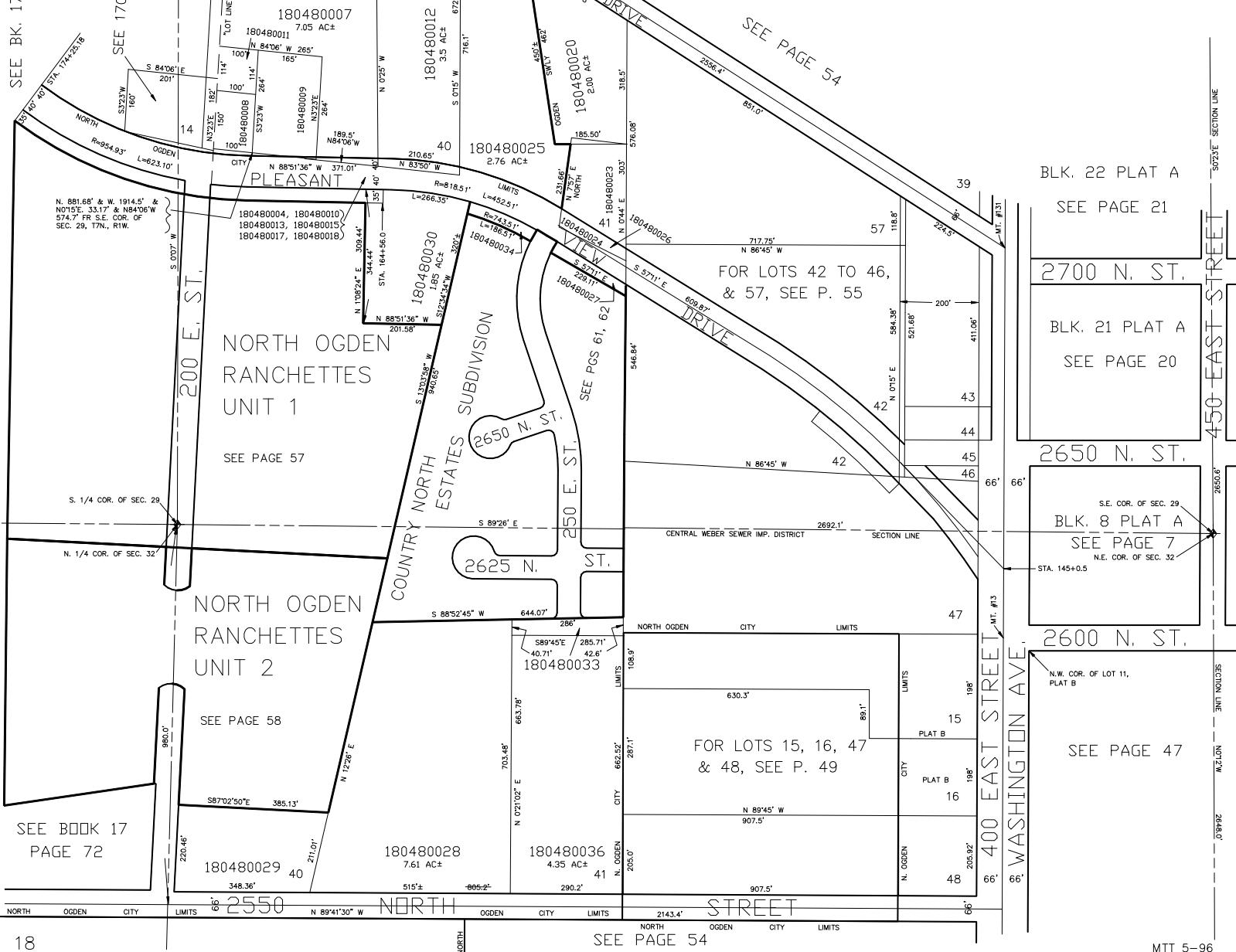
IN NORTH OGDEN CITY

SCALE 1" = 200'

TAXING UNIT: 03, 10

STREET NAME

SEE BK. 17 PAGE 50



BLK. 22 PLAT A  
SEE PAGE 21

2700 N. ST.  
BLK. 21 PLAT A  
SEE PAGE 20

2650 N. ST.  
S.E. COR. OF SEC. 29  
BLK. 8 PLAT A  
SEE PAGE 7  
N.E. COR. OF SEC. 32  
STA. 145+0.5

2600 N. ST.  
N.W. COR. OF LOT 11, PLAT B  
SEE PAGE 47